

# 17120

## Lavatory Carrier

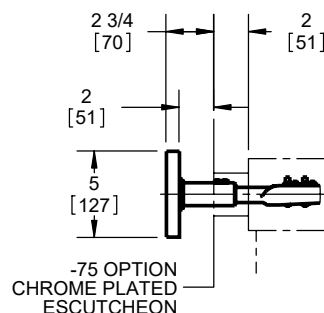
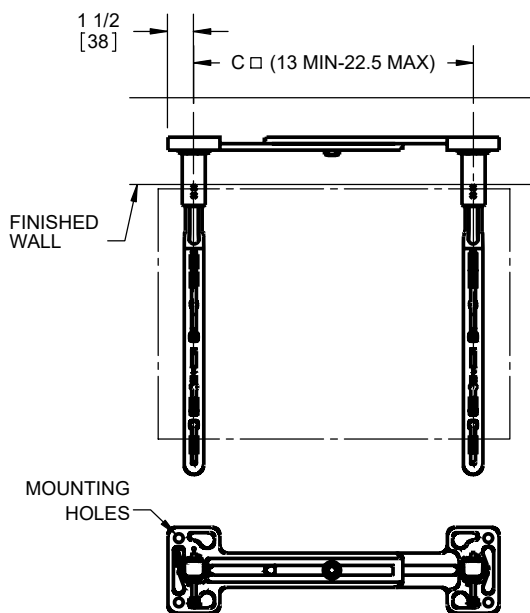
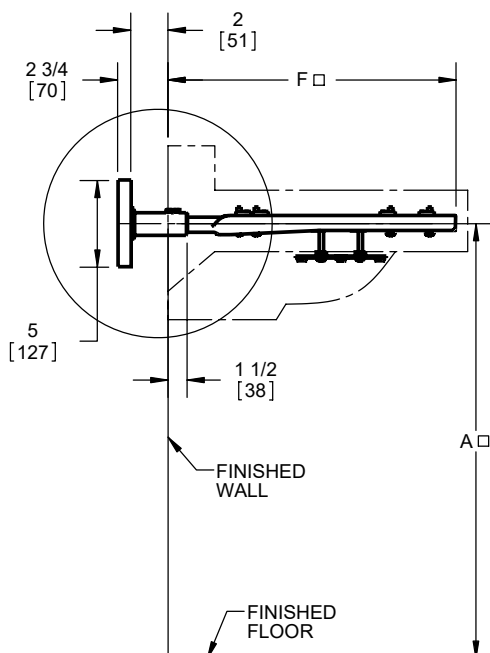
### Wall-Mount Concealed Arm

#### Specification

Josam 17120 series wall-mounted, single lavatory carrier with concealed arms, leveling and securing screws, and adjustable wall plate.

□ Denotes variable. Dimension depends on fixture.  
Standard adjustable sleeve is 4" long.

\* Separate submittal for this option available.



-BP*	With back plates
-MMB*	With movable mounting brackets
-10*	Extension sleeves longer than standard (specify wall thickness)
-67	Concealed arm carrier for wheelchair lavatory
-75	2" chrome plated escutcheons
-76	4" chrome plated escutcheons
-77	6" chrome plated escutcheons

Manufacturer

Number

Size

Name

Dimensions

A \_\_\_\_\_

C \_\_\_\_\_

F \_\_\_\_\_

Rim height \_\_\_\_\_

Based on "A" Dim shown

Josam product specifications in U.S. customary units are approximate and provided for reference only. For precise measurements, please contact Josam Technical Support. Josam reserves the right to change or modify product design, construction, specifications, or materials without prior notice and without incurring any obligation to make such changes and modifications on Josam products previously or subsequently sold.

Notes:

